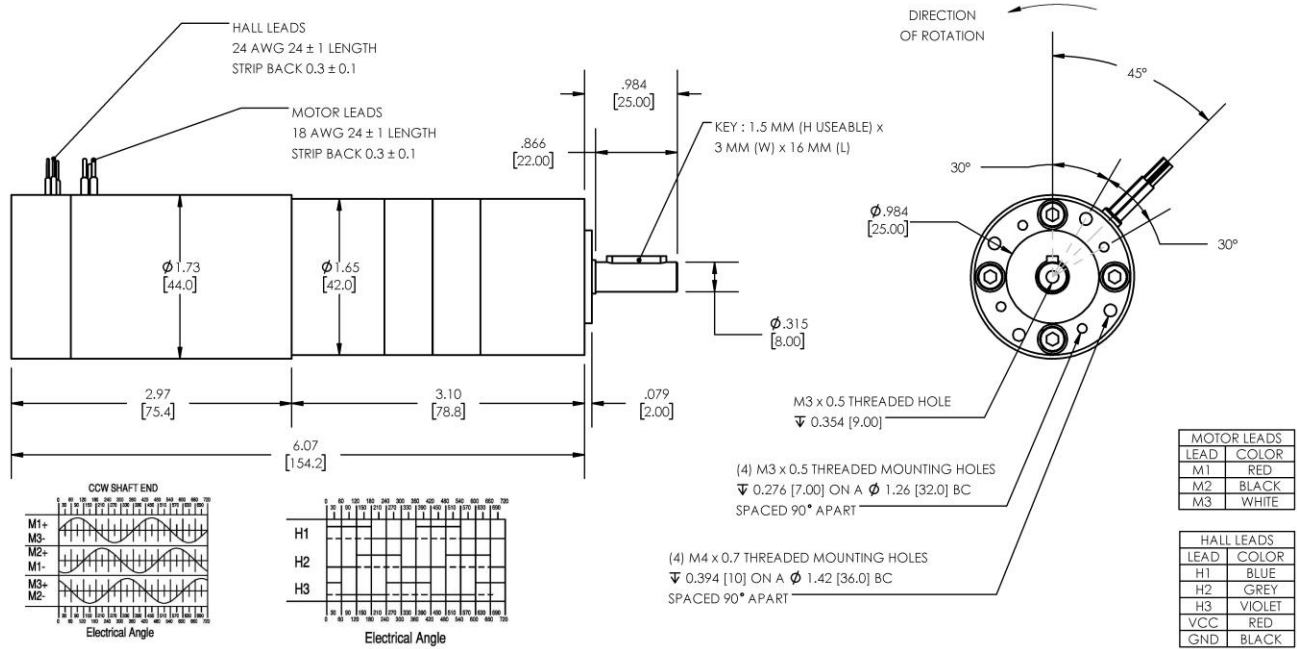




REVERSIBLE BRUSHLESS DC PLANETARY GEARMOTOR

Model Number:

MMP BL44-297H-60V GP42-019



DIMENSIONS ARE INCHES [MM] UNLESS OTHERWISE STATED

| PLANETARY GEARMOTOR OUTPUT PARAMETERS: | VALUE | UNITS | TOLERANCE |
|--|-------------|-------------|-----------|
| Gearhead Ratio (exact) | 19.20 : 1 | | |
| Gearhead Shaft Output Speed (at full-load) | 142 | RPM | MAX |
| Gearmotor Rated Continuous Torque | 18 | In-Lbs | MAX |
| Gearmotor Rated Peak Torque | 67++ | In-Lbs | ---- |
| Gearhead Standard Backlash | 57 | Arc Minutes | MAX |
| Gearhead Efficiency | 75% | ---- | ---- |
| Output Shaft Radial Load Capacity | 52 | Lbs | MAX |
| Output Shaft Axial Load Capacity | 18 | Lbs | MAX |
| Gearmotor Total Weight | 1.9 | Lbs | MAX |

++ All Peak Torque values are dependent upon duty. Contact our sales office for details.

| DC MOTOR PERFORMANCE PARAMETERS: | VALUE | UNITS | TOLERANCE |
|----------------------------------|-------|-----------|-----------|
| Rated DC Voltage | 60 | DC VOLTS | ---- |
| Rated Continuous Current | 0.89 | AMPERES | ---- |
| No-Load Speed | 3331 | RPM | +/- 15% |
| Rated Speed | 2723 | RPM | +/- 15% |
| Rated Continuous Power Out | 40 | WATTS | +/- 15% |
| Rated Continuous Torque | 20 | OZ-IN | ---- |
| Peak Torque (motor only) | 74 | OZ-IN | ---- |
| No-Load Current | 0.05 | AMPERES | 10% |
| Back EMF Constant (Ke) | 17.8 | V/KRPM | +/- 10% |
| Torque Constant (Kt) | 24.0 | OZ-IN/AMP | +/- 10% |
| DC Armature Resistance | 13.00 | OHMS | +/- 15% |
| Armature Inductance | 10.24 | mH | +/- 15% |
| Armature temperature | 155 | DEG. C | MAX |

NOTES:

- ENCODER & BRAKE OPTIONS AVAILABLE – [FOLLOW THIS LINK FOR DETAILS](#)
- NEMA MOUNTING FLANGE OPTION AVAILABLE – [FOLLOW THIS LINK FOR DETAILS](#)

MIDWEST MOTION PRODUCTS, INC

DESIGN, MANUFACTURING & DISTRIBUTION - MOTION CONTROL EQUIPMENT

www.midwestmotion.com

email: sales@midwestmotion.com